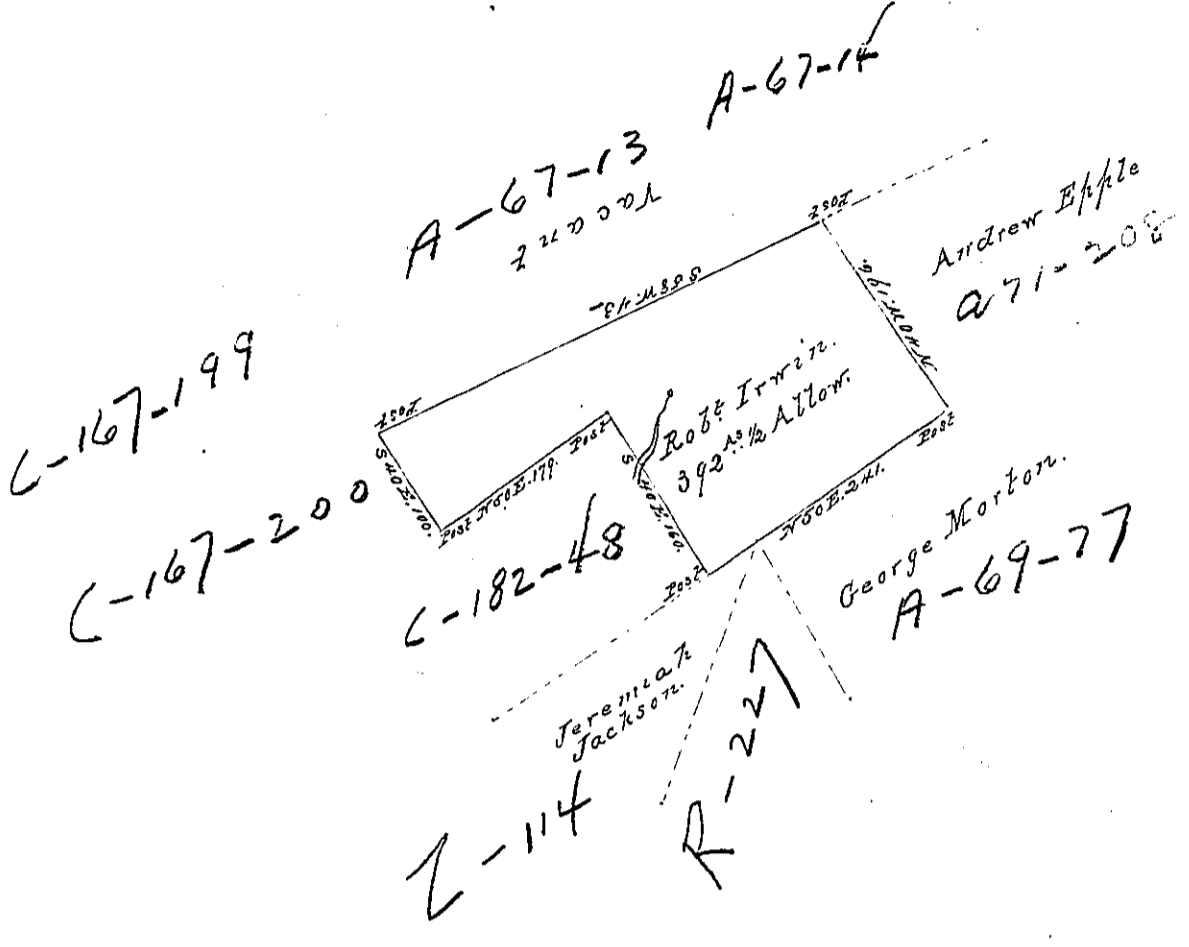


Belong to ...



Situate on the waters of Mark Creek in Bald Eagle Township in the County of Mifflin Surveyed on the 19 Day of August 1794 for Robert Irwin by virtue of his Warrant bearing date on the 1 Day July 1793, containing Three hundred Ninety two Acres & the usual Allowance.

To Daniel Brodhead Esq. }
 Surveyor General } Jo. J. Wallis D.S.

IN TESTIMONY that the above is a copy of the original remaining on file in the Department of Internal Affairs of Pennsylvania, made conformably to an Act of Assembly approved the 16th day of February, 1833, I have hereunto set my Hand and caused the Seal of said Department to be affixed at Harrisburg, this

twenty first day of January 1836.

J. Simpson Africa,
 Secretary of Internal Affairs